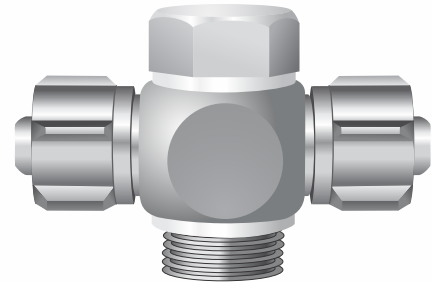
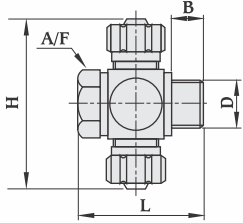


Swivel Tee (ST)

Basic Dimensions



Material

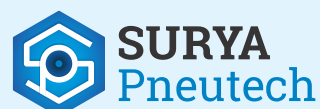
Aluminium

Finish

Blue anodised

Order code No. and type	Tube ID in mm	Connection (D)	Nominal Bore in mm	Dimensions			
				B mm	H mm	L mm	A/F
ST - 1/8" - PU - 3	3	1/8" BSP	2.4	6.0	36.0	22.0	1/2"
ST - 1/8" - PU - 4	4	1/8" BSP	3.4	6.0	43.0	28.0	1/2"
ST - 1/8" - PU - 6	6	1/8" BSP	5.3	6.0	43.0	28.0	1/2"
ST - 1/4" - PU - 4	4	1/4" BSP	3.4	7.0	46.0	29.5	5/8"
ST - 1/4" - PU - 6	6	1/4" BSP	5.3	7.0	46.0	29.5	5/8"
ST - 1/4" - PU - 8	8	1/4" BSP	7.0	7.0	56.0	34.0	5/8"
ST - 3/8" - PU - 6	6	3/8" BSP	5.3	8.0	52.0	31.5	7/8"
ST - 3/8" - PU - 8	8	3/8" BSP	7.0	8.0	62.5	41.0	7/8"
ST - 3/8" - PU - 9	9	3/8" BSP	8.0	9.0	62.5	41.0	7/8"

Note: Subject to change without prior notice



Surya Pneutech

Gat No. 166, Triveni Nagar,
Talwade, Pune 412 114 INDIA
Call : +91 98811 46417
E-mail : info@suryapneutech.com
www.suryapneutech.com